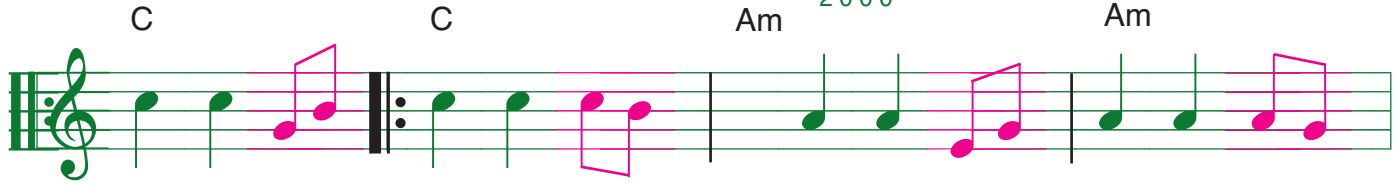
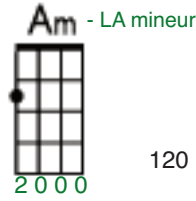
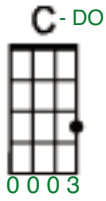


STAND BY ME POUR URULELE

Par Alain B Buisson

120 DO majeur, tonalité original, LA Majeur

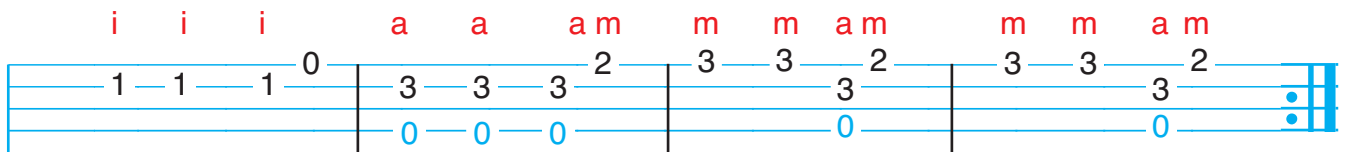
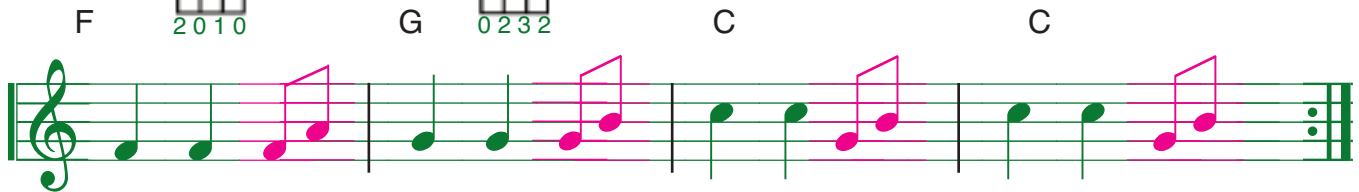
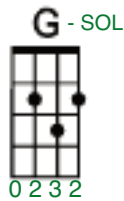
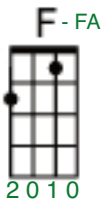


C Am

When the night has come and the land is dark
 No, I won't be afraid, No, I won't be afraid
 So, darling, darling, stand by me, Oh, stand by me.
 If the sky that we look upon should tumble and fall
 I won't cry, I won't cry, No, I won't shed a tear
 So, darling, darling, stand by me, Oh, stand by me.

C C Am Am
 C C Am Am

So, darling, darling, stand by me, Oh, stand by me.
 So, darling, darling, stand by me, Oh, stand by me.



F G C C

And the moon is the only light we'll see
 Just as long as you stand, stand by me.
 Oh, stand, stand by me, Stand by me.
 Or the mountain should crumble in the sea,
 Just as long as you stand, stand by me.
 Oh, stand, stand by me, Stand by me.

F G C C
 F G C C
 Oh, stand, stand by me, Stand by me.
 Oh, stand, stand by me, Stand by me.

[C / C / Am / Am]

[F / G / C / C]